



**Apex Instruments, Inc.**  
 204 Technology Park Lane  
 Fuquay-Varina, N.C. 27526 USA  
 919-557-7300  
 info@apexinst.com  
 www.apexinst.com

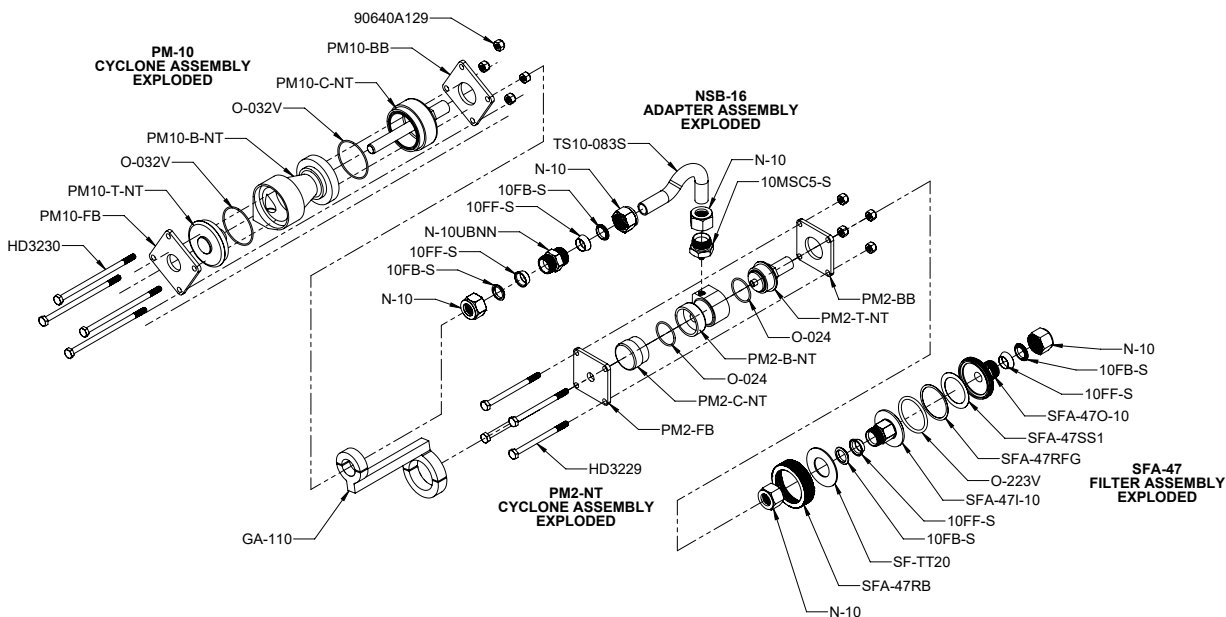
## Simultaneous PM10 and PM2.5 Breakaway Cyclone Kit PM2.5-10K-NT - Packing List

<b>PM2.5-10K-NT includes:</b>			
<b>Part #</b>	<b>Description</b>	<b>Quantity</b>	<b>Qty Shipped</b>
PM10-NT	PM10 Cyclone Body Only, SS, 5/8" Bored	1	
<b>Includes:</b>	<b>PM10-B-NT</b> Cyclone Body, No Threads	1	
	<b>PM10-C-NT</b> Collection Cup No Threads	1	
	<b>PM10-T-NT</b> Cap No Threads	1	
	<b>O-032V</b> Viton O-ring for PM10 Cyclone	6	
PM10-NS	Nozzles, Set of 12 for PM10 Cyclone	1	
<b>Includes:</b>	<b>PM10-N0</b> Nozzle, PM10, SS, .125 Size 0	1	
	<b>PM10-N1</b> Nozzle, PM10, SS, .136 Size 1	1	
	<b>PM10-N2</b> Nozzle, PM10, SS, .150 Size 2	1	
	<b>PM10-N3</b> Nozzle, PM10, SS, .164 Size 3	1	
	<b>PM10-N4</b> Nozzle, PM10, SS, .180 Size 4	1	
	<b>PM10-N5</b> Nozzle, PM10, SS, .197 Size 5	1	
	<b>PM10-N6</b> Nozzle, PM10, SS, .215 Size 6	1	
	<b>PM10-N7</b> Nozzle, PM10, SS, .233 Size 7	1	
	<b>PM10-N8</b> Nozzle, PM10, SS, .264 Size 8	1	
	<b>PM10-N9</b> Nozzle, PM10, SS, .300 Size 9	1	
	<b>PM10-N10</b> Nozzle, PM10, SS, .342 Size 10	1	
	<b>PM10-N11</b> Nozzle, PM10, SS, .390 Size 11	1	
PM2-NT	PM2.5 Cyclone Body Only, SS, 5/8" Bored	1	
<b>Includes:</b>	<b>PM2-B-NT</b> Cyclone Body No Threads	1	
	<b>PM2-C-NT</b> Collection Cup No Threads	1	
	<b>PM2-T-NT</b> Top, Outlet for the PM2.5, No Threads	1	
	<b>O-024V</b> O-ring, Viton, PM2.5	6	
N-10UBNN	Union, 5/8" Body Only, SS, .330" Bored	1	
NSB-16	PM10/2.5 Adapter, Button Hook Adapter	1	
10MSC5-S	PM10-2.5 Connector	1	
GA-110	Adapter, Strain Relief for PM10 and PM2.5 Cyclones	1	
AZNI-4	Anti-Seize, NI, .25 oz Tube	1	
SFA-47	Filter Assembly, 47mm, 5/8 TU, SS w/Viton O-rings	<b>%fGYY'SFA-47'D@</b>	
PM2.5-10 CS	Case, PM10-2.5 Kit, w/foam inserts	1	
<b>Includes:</b>	<b>SH-50</b> Case, Plastic, Molded	1	
	<b>PM10-2.5FOAM</b> Foam Insert for Case	1	

### Modular Pitot - Sold Separately

MPT-6-425-OFF Extended Pitot Tip, PM2.5-10, SS

## Exploded View of the PM10 and PM2.5 Stainless Steel Combination



### Options, Replacement Parts and Accessories

Part #	Description
MPT-6-425-OFF-WC	Extended Pitot Tip for PM10-2.5 Combination, w/fittings, Offset, Wind Calibrated
O-032V	O-Ring, PM10, Viton (260 °C/500 °F)
O-032H	O-Ring, PM10, Stainless Steel (650 °C/1200 °F)
O-223V	O-Ring, SFA-47, Viton (260 °C/500 °F)
O-223H	O-Ring, SFA-47, Stainless Steel (650 °C/1200 °F)
O-024V	O-Ring, PM 2.5, Viton
O-024H	O-Ring, PM 2.5, Stainless Steel
SF-TT20	Ring, Thrust, SFA-47, Teflon
SFA-47SS1	Screen, Filter Support, 47mm, SS1
SFA-47RFG	Filter Ring Guard, SS
GF-47	Filters, Glass Fiber, 47 mm
GF-47TPG	Filters, PFA/Glass Fiber, 47 mm

### Breakaway Bracket Hardware

PM10-BB	PM10 Back Bracket	PM2-BB	PM2 Back Bracket
PM10-FB	PM10 Front Bracket	PM2-FB	PM2 Front Bracket
HD3230	PM10 Bracket Bolt	HD3229	PM2 Bracket Bolt

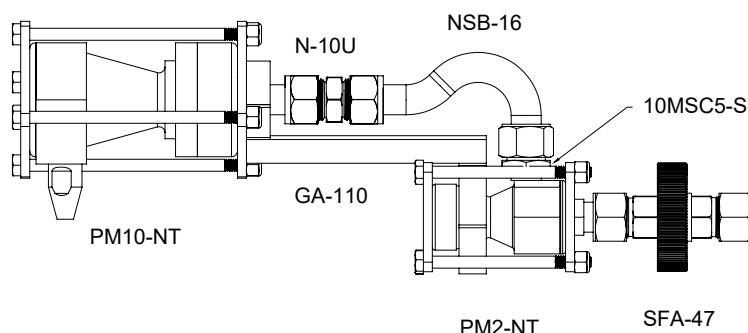
### Software

Although it is possible to do the setup and data analysis calculations for the PM10 and PM2.5 by hand or with calculators, the number of calculations which must be done to treat the data from just one run make hand calculations impractical. Apex Instruments offers the PM-2.5-10C Particle Sizing Software which provides full support for the PM10 and PM2.5 sampling and analysis.

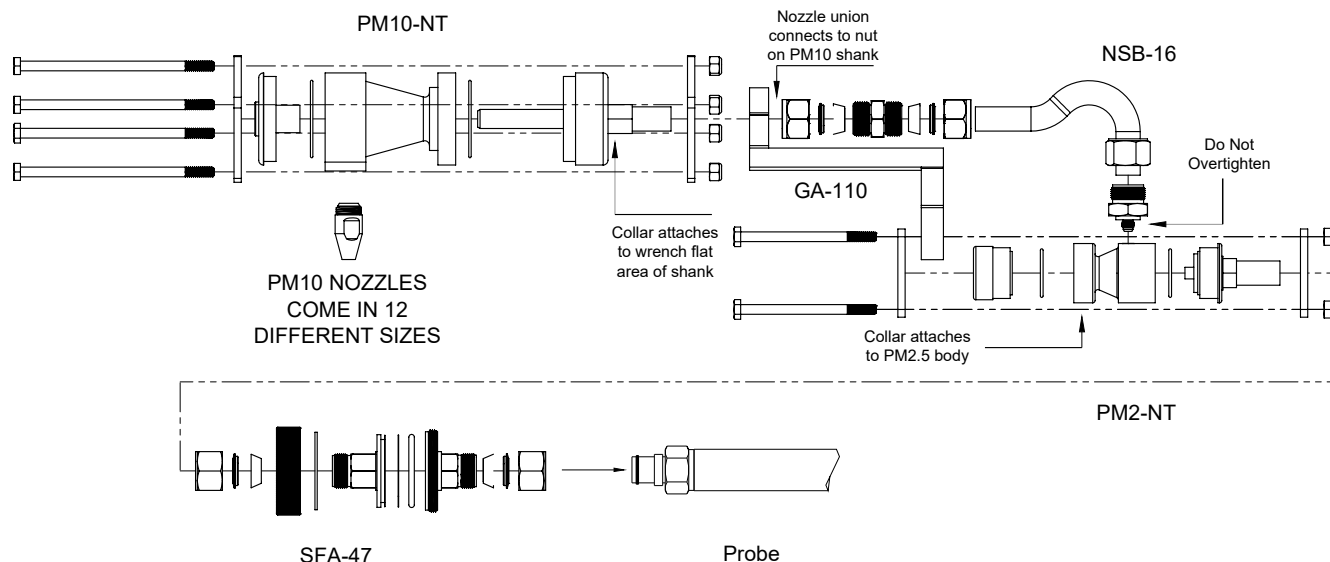
PM-2.5-10C	Particle Sizing Software for PM10 & PM2.5 Cyclones
------------	--

## Simultaneous PM10 and PM2.5 Breakaway Cyclone Sampling Kit

The Apex Instruments PM10 and PM2.5 configuration is attached to the standard Method 5 probe and must be used in conjunction with the extended pitot tip which is sold separately. This method applies to the in-stack measurement of particulate matter equal to or less than an aerodynamic diameter of nominally 10 (PM10) and 2.5 (PM2.5) micrometer from stationary sources. The EPA recognizes that condensable emissions not collected by an in-stack method are also PM10, and that emissions that contribute to ambient PM10 levels are the sum of condensable emissions and emissions measured by an in-stack PM10 method, such as Method 201A. The non-threaded assembly, also known as breakaway style, is constructed with bolt-together rather than screw together and is used for higher temperatures (up to 1000°F). The breakaway uses expendable stainless steel bolts that can be over-torqued and broken if necessary to release cyclone closures, thus allowing you to recover PM without damaging the cyclone flanges or contaminating the samples.



The PM10 serves as the sampling head followed by the PM2.5 that are attached using the PM2.5-10 gooseneck nozzle. The combined cyclones are then mounted on a 47mm Stainless Steel Filter that is then attached to the end of the Standard Method 5 probe.



**Exploded View of Assembly**



Apex Instruments, Inc.  
204 Technology Park Lane  
Fuquay-Varina, N.C. 27526 USA  
919-557-7300  
info@apexinst.com  
www.apexinst.com

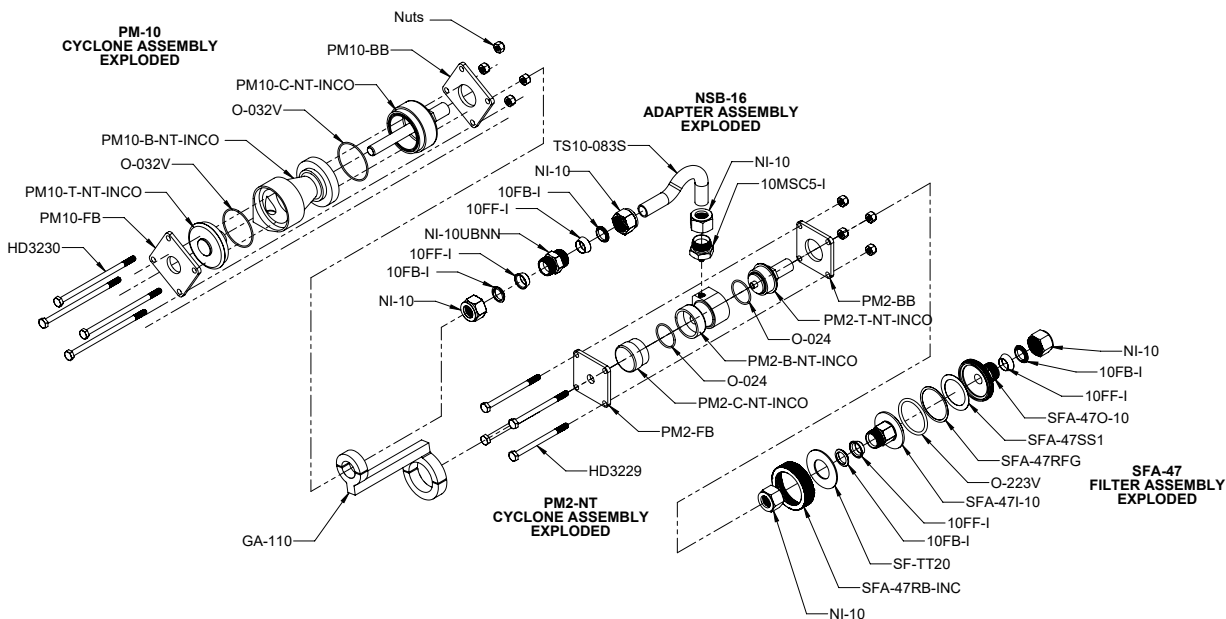
## Simultaneous PM10 and PM2.5 Non-Threaded Inconel Cyclone Kit PM2.5-10K-NT-INCO - Packing List

<b>PM2.5-10K-NT-INCO includes:</b>			
<b>Part #</b>	<b>Description</b>	<b>Quantity</b>	<b>Qty Shipped</b>
PM10-NT-INCO	PM10 Cyclone Body Only, Inconel with 1/4" O.D. x 1/2" I.D.	1	
<b>Includes:</b>	<b>PM10-B-NT</b> Cyclone Body, No Threads	1	
	<b>PM10-C-NT</b> Collection Cup No Threads	1	
	<b>PM10-T-NT</b> Cap No Threads	1	
	<b>O-032V</b> Viton O-ring for PM10 Cyclone	6	
PM10-NI	Nozzles, Set of 12 for PM10 Cyclone	1	
<b>Includes:</b>	<b>PM10-N0-INCO</b> Nozzle, PM10, Inconel, .125 Size 0	1	
	<b>PM10-N1-INCO</b> Nozzle, PM10, Inconel, .136 Size 1	1	
	<b>PM10-N2-INCO</b> Nozzle, PM10, Inconel, .150 Size 2	1	
	<b>PM10-N3-INCO</b> Nozzle, PM10, Inconel, .164 Size 3	1	
	<b>PM10-N4-INCO</b> Nozzle, PM10, Inconel, .180 Size 4	1	
	<b>PM10-N5-INCO</b> Nozzle, PM10, Inconel, .197 Size 5	1	
	<b>PM10-N6-INCO</b> Nozzle, PM10, Inconel, .215 Size 6	1	
	<b>PM10-N7-INCO</b> Nozzle, PM10, Inconel, .233 Size 7	1	
	<b>PM10-N8-INCO</b> Nozzle, PM10, Inconel, .264 Size 8	1	
	<b>PM10-N9-INCO</b> Nozzle, PM10, Inconel, .300 Size 9	1	
	<b>PM10-N10-INCO</b> Nozzle, PM10, Inconel, .342 Size 10	1	
	<b>PM10-N11-INCO</b> Nozzle, PM10, Inconel, .390 Size 11	1	
PM2-NT-INCO	PM2.5 Cyclone Body Only, Inconel with 1/4" O.D. x 1/2" I.D.	1	
<b>Includes:</b>	<b>PM2-B-NT-INCO</b> Cyclone Body No Threads	1	
	<b>PM2-C-NT-INCO</b> Collection Cup No Threads	1	
	<b>PM2-T-NT-INCO</b> Top, Outlet for the PM2.5, No Thread	1	
	<b>O-024V</b> O-ring, Viton, PM2.5	6	
NI-10UBNN	Union, 5/8" Body Only, Inconel, .330" Bored	1	
NSB-16-INCO	PM10/2.5 Adapter, Button Hook Adapter	1	
10MSC5-I	PM10-2.5 Connector	1	
GA-110	Adapter, Strain Relief for PM10 and PM2.5 Cyclones	1	
AZNI-4	Anti-Seize, NI, .25 oz Tube	1	
SFA-47-INCO	Filter Assembly, 47mm, 5/8 TU, SS w/Viton O-rings	<b>%fGYY'SFA-47'D@</b>	
PM2.5-10 CS	Case, PM10-2.5 Kit, w/foam inserts	1	
<b>Includes:</b>	<b>SH-50</b> Case, Plastic, Molded	1	
	<b>PM10-2.5FOAM</b> Foam Insert for Case	1	

### Modular Pitot - Sold Separately

MPT-6-425-OFF Extended Pitot Tip, PM2.5-10, SS

## Exploded View of the PM10 and PM2.5 Inconel Combination



## Options, Replacement Parts and Accessories

Part #	Description
MPT-6-425-OFF-WC	Extended Pitot Tip for PM10-2.5 Combination, w/fittings, Offset, Wind Calibrated
O-032V	O-Ring, PM10, Viton (260 °C/500 °F)
O-032H	O-Ring, PM10, Stainless Steel (650 °C/1200 °F)
O-223V	O-Ring, SFA-47, Viton (260 °C/500 °F)
O-223H	O-Ring, SFA-47, Stainless Steel (650 °C/1200 °F)
O-024V	O-Ring, PM 2.5, Viton
O-024H	O-Ring, PM 2.5, Stainless Steel
SF-TT20	Ring, Thrust, SFA-47, Teflon
SFA-47SS1	Screen, Filter Support, 47mm, SS1
SFA-47RFG	Filter Ring Guard, SS
GF-47	Filters, Glass Fiber, 47 mm
GF-47TPG	Filters, PFA/Glass Fiber, 47 mm

## Breakaway Bracket Hardware

PM10-BB	PM10 Back Bracket	PM2-BB	PM2 Back Bracket
PM10-FB	PM10 Front Bracket	PM2-FB	PM2 Front Bracket
HD3230	PM10 Bracket Bolt	HD3229	PM2 Bracket Bolt

## Software

Although it is possible to do the setup and data analysis calculations for the PM10 and PM2.5 by hand or with calculators, the number of calculations which must be done to treat the data from just one run make hand calculations impractical. Apex Instruments offers the PM-2.5-10C Particle Sizing Software which provides full support for the PM10 and PM2.5 sampling and analysis.

PM-2.5-10C	Particle Sizing Software for PM10 & PM2.5 Cyclones
------------	--