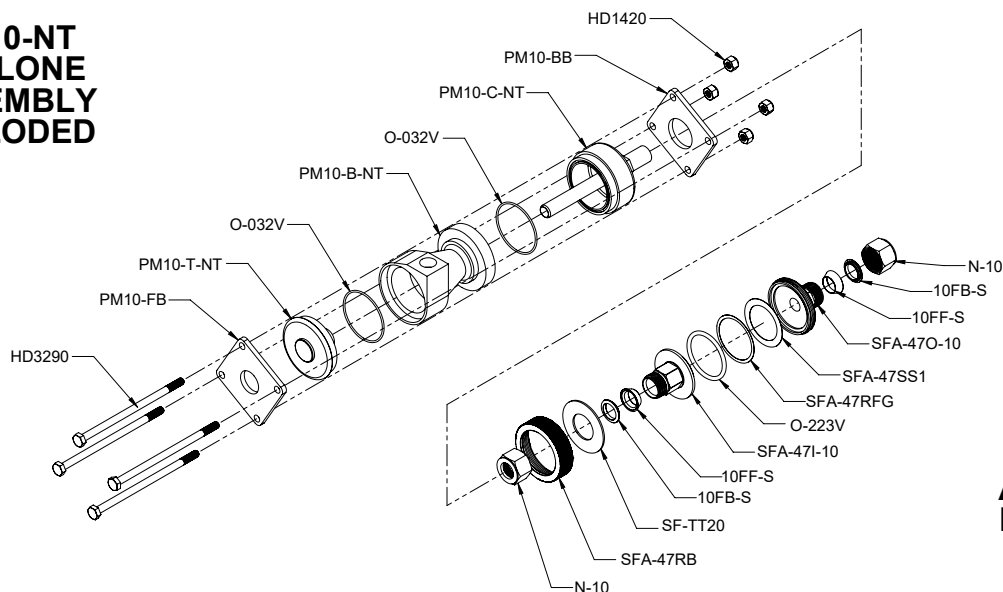


PM10 Breakaway Cyclone Assembly # PM10-NT-K Packing List

PM10-NT CYCLONE ASSEMBLY EXPLODED



SFA-47 FILTER ASSEMBLY EXPLODED

PM10-NT-K includes:			
Part #	Description		Quantity
PM10	PM10 Cyclone Body Only, SS, Method 201A		1
Includes:	PM10-B-NT	Cyclone Body	1
	PM10-C-NT	Collection Cup	1
	PM10-T-NT	Cap	1
	O-032V	Viton O-ring for PM10 Cyclone	6
PM10-NS	Nozzles, Set of 12 for PM10 Cyclone		1
Includes:	PM10-N0	Nozzle, PM10, SS, .125 Size 0	1
	PM10-N1	Nozzle, PM10, SS, .136 Size 1	1
	PM10-N2	Nozzle, PM10, SS, .150 Size 2	1
	PM10-N3	Nozzle, PM10, SS, .164 Size 3	1
	PM10-N4	Nozzle, PM10, SS, .180 Size 4	1
	PM10-N5	Nozzle, PM10, SS, .197 Size 5	1
	PM10-N6	Nozzle, PM10, SS, .215 Size 6	1
	PM10-N7	Nozzle, PM10, SS, .233 Size 7	1
	PM10-N8	Nozzle, PM10, SS, .264 Size 8	1
	PM10-N9	Nozzle, PM10, SS, .300 Size 9	1
	PM10-N10	Nozzle, PM10, SS, .342 Size 10	1
	PM10-N11	Nozzle, PM10, SS, .390 Size 11	1
SFA-47	Filter Assembly, 47mm, 5/8 TU, SS w/Viton O-rings		1 (see SFA-47 Packing List)
PM10-CS	Case, PM10 or PM2.5, with Foam insert		1
Includes:	SH-32	Case, Plastic, Molded	1
	PM10-FOAM	Foam Insert for Case	1
AZNI-4	Anti-Seize, NI, .25 oz tube		1

Stainless Steel Replacement Parts and Accessories

<i>Part #</i>	<i>Description</i>
MPT-6-255-OFF-WC	Extended Pitot Tip for PM10, Offset, Wind Cal.
O-032V	O-ring, PM10, Viton (260 °C/500 °F)
O-032H	O-ring, PM10, Stainless Steel (650 °C/1200 °F)
O-223V	O-ring, SFA-47, Viton (260 °C/500 °F)
O-223H	O-ring, SFA-47, Stainless Steel (650 °C/1200 °F)
SF-TT20	Ring, Thrust, SFA-47, Teflon
SFA-47SS1	Screen, Filter Support, 47mm, SS1
GF-47	Filters, Glass Fiber, 47 mm
GF-47QH	Filters, Quartz Fiber, 47 mm
GF-47TPG	Filters, PTFE/Glass Fiber, 47 mm

Inconel Replacement Parts and Accessories

<i>Part #</i>	<i>Description</i>
MPT-6-255-OFF-WC-INCO	Extended Pitot Tip for PM10, Offset, Wind Cal.
O-032V	O-ring, PM10, Viton (260 °C/500 °F)
O-032H	O-ring, PM10, Stainless Steel (650 °C/1200 °F)
O-223V	O-ring, SFA-47, Viton (260 °C/500 °F)
O-223H	O-ring, SFA-47, Stainless Steel (650 °C/1200 °F)
SF-TT20	Ring, Thrust, SFA-47, Teflon
SFA-47SS-INCO	Screen, Filter Support, 47mm, Inconel
GF-47	Filters, Glass Fiber, 47 mm
GF-47QH	Filters, Quartz Fiber, 47 mm
GF-47TPG	Filters, PTFE/Glass Fiber, 47 mm

Breakaway Bracket Hardware

PM10-BB	PM10 Back Bracket
PM10-FB	PM10 Front Bracket
HD3230	PM10 Bracket Bolt

PM10-NT-K for the Determination of PM10 Emissions

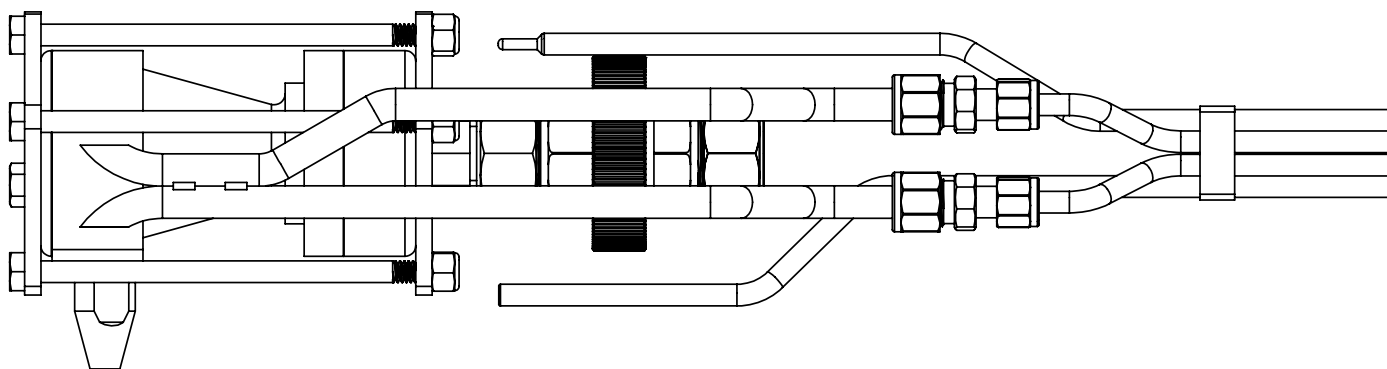
The PM10 Cyclone is built to USEPA specifications for Method 201A testing and is designed for in-stack measurement of particulate matter equal to or less than 10 microns. The shank has a 5/8-inch outer diameter for easy adaptation to method 5 probe assemblies. The cyclone and twelve nozzles are enclosed in a sturdy, foam-lined, plastic case.

The durable stainless steel construction makes this cyclone ideal for high temperatures up to 260°C (500°F). We also have the stainless steel O-rings available for high-temperature conditions.

Our high temperature version of the product, made of alloy 600, is recommended for temperature up to 871° (1600 °F)



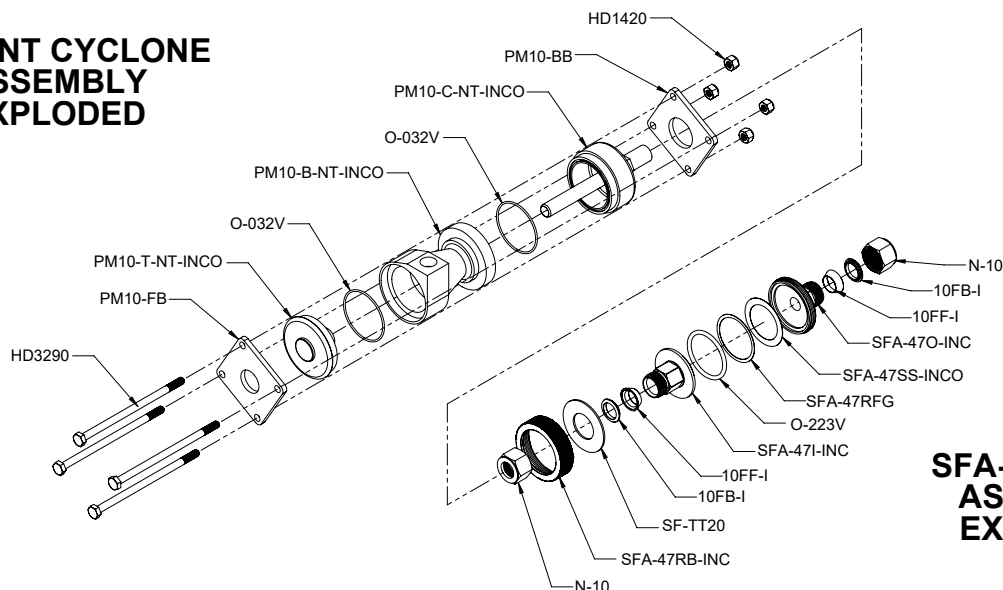
The non-threaded assembly, also known as breakaway style, is constructed with bolt-together rather than screw together and is used for higher temperatures (up to 1000°F). The breakaway uses expendable stainless steel bolts that can be over-torqued and broken if necessary to release cyclone closures, thus allowing you to recover PM without damaging the cyclone flanges or contaminating the samples.



PM10-NT-K assembled on probe.

PM10 Inconel Breakaway Cyclone Assembly PM10-K-INCO Packing List

PM10-NT CYCLONE ASSEMBLY EXPLODED



SFA-47 FILTER ASSEMBLY EXPLODED

PM10-K-INCO includes:

Part #	Description	Quantity	Qty Shipped
PM10-INCO	PM10 Cyclone Body Only, Inconel, Method 201A	1	
Includes:			
	PM10-B-NT-INCO Cyclone Body	1	
	PM10-C-NT-INCO Collection Cup	1	
	PM10-T-NT-INCO Cap	1	
	O-032V Viton O-ring for PM10 Cyclone	6	
PM10-NI	Nozzles, Set of 12 for PM10 Cyclone	1	
Includes:			
	PM10-N0-INCO Nozzle, PM10, Inconel, .125 Size 0	1	
	PM10-N1-INCO Nozzle, PM10, Inconel, .136 Size 1	1	
	PM10-N2-INCO Nozzle, PM10, Inconel, .150 Size 2	1	
	PM10-N3-INCO Nozzle, PM10, Inconel, .164 Size 3	1	
	PM10-N4-INCO Nozzle, PM10, Inconel, .180 Size 4	1	
	PM10-N5-INCO Nozzle, PM10, Inconel, .197 Size 5	1	
	PM10-N6-INCO Nozzle, PM10, Inconel, .215 Size 6	1	
	PM10-N7-INCO Nozzle, PM10, Inconel, .233 Size 7	1	
	PM10-N8-INCO Nozzle, PM10, Inconel, .264 Size 8	1	
	PM10-N9-INCO Nozzle, PM10, Inconel, .300 Size 9	1	
	PM10-N10-INCO Nozzle, PM10, Inconel, .342 Size 10	1	
	PM10-N11-INCO Nozzle, PM10, Inconel, .390 Size 11	1	
SFA-47-INCO	Filter Assembly, 47mm, 5/8 TU, Inconel w/Viton O-rings	1 (see SFA-47 Packing List)	
PM10-CS	Case, PM10 or PM2.5, with Foam insert	1	
Includes:			
	SH-32 Case, Plastic, Molded	1	
	PM10-FOAM Foam Insert for Case	1	
AZNI-4	Anti-Seize, NI, .25 oz tube	1	