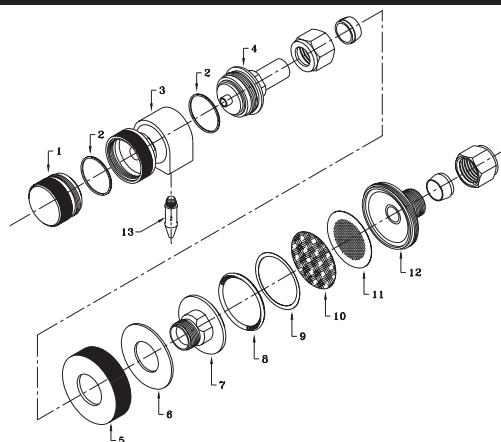


## PM1 Cyclone Sampling Kit #PM1-K Packing List

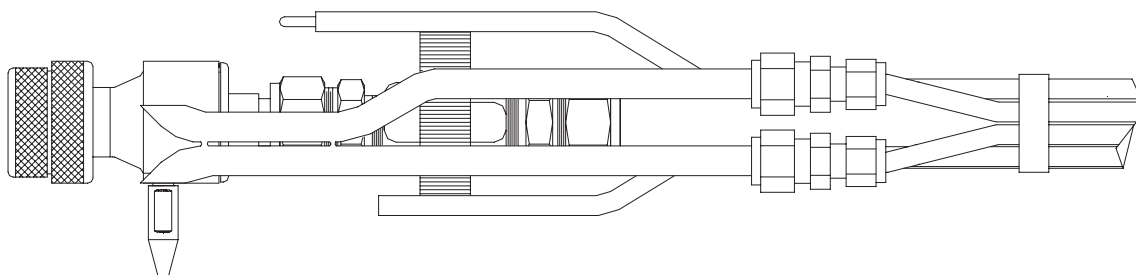


PM1-K Kit Includes:					
Ref. No	Part #	Description		Quantity	Qty Shipped
	PM1	PM1 Cyclone Body, SS with Viton O-Rings		1	
		10FF-S, 10FB-S	Ferrules, Front and Back, 5/8, SS	1	
		N-10	Nut, 5/8, Tube, SS	1	
1	Includes:	PM1-C	Collection Cup for PM1	1	
2		O-017V	O-Ring, Size 017, Viton	6	
3		PM1-B	Body for the PM2.5 Cyclone	1	
4		PM1-T	Top, Outlet for the PM1	1	
16	PM2-NS	Nozzles, Set of 12, PM2.5, SS (One Nozzle Shown)		1	
	Includes:	PM2-N1	Nozzle, PM2, SS, .125 Size 1	1	
		PM2-N2	Nozzle, PM2, SS, .138 Size 2	1	
		PM2-N3	Nozzle, PM2, SS, .156 Size 3	1	
		PM2-N4	Nozzle, PM2, SS, .172 Size 4	1	
		PM2-N5	Nozzle, PM2, SS, .188 Size 5	1	
		PM2-N6	Nozzle, PM2, SS, .200 Size 6	1	
		PM2-N7	Nozzle, PM2, SS, .216 Size 7	1	
		PM2-N8	Nozzle, PM2, SS, .234 Size 8	1	
		PM2-N9	Nozzle, PM2, SS, .253 Size 9	1	
		PM2-N10	Nozzle, PM2, SS, .274 Size 10	1	
		PM2-N11	Nozzle, PM2, SS, .296 Size 11	1	
		PM2-N12	Nozzle, PM2, SS, .320 Size 12	1	
	SFA-47	Filter Assembly, 47mm, 5/8TU, SS		1	
5	Includes:	10FF-S, 10FB-S	Ferrules, Front and Back, 5/8, SS	2	
6		N-10	Nut, 5/8, Tube, SS	2	
7		SFA-47RB	Ring, Knurled and Threaded, SS	1	
8		SF-TT20	Thrust Ring, Teflon .062" thick	1	
9		SFA-47I-10	Inlet, Filter, SS for SFA-47, 5/8 TU	1	
10		O-223V	O-Ring, Viton for SFA-47 (260°C/500°F)	3	
11		SFA-47RFG	Filter Guard Ring, SS	1	
12		SFA-47SS1	Screen, Filter Support, SS	1	
13		SFA-47O-10	Outlet, Filter, SS, 5/8 TU	1	
	PM10-CS	Case, PM10 or PM2.5, with Foam Insert, Cyclone		1	

## PM1 Cyclone Sampling Kit



The cyclone is based on the cyclone "V" from the multi-stage cyclone system designed and calibrated by Southern Research Institute under contract for the EPA. The design has been modified to accept the nozzles from the PM2.5 cyclone, which has been expanded to a set of 12 different size nozzles. The sample flow rate must be maintained, in which the constant rate determines the actual "D50" cut-point. The cyclone is followed by a 47mm filter assembly. Quartz- or PTFE-coated glass fiber filters should be used to minimize reactivity with the flue gas. The cyclone and nozzles are constructed from grade 316 stainless steel with Viton O-rings.



	<b>Optional Parts and Accessories:</b>	
10* <i>Option</i>	47mm TFE Coated Glass Fiber Filters, 100/box	GF-47T
8* <i>Option</i>	O-Ring, Stainless Steel, SFA-47 (650°C/1200°F)	O-223H
2* <i>Option</i>	O-Ring, Stainless Steel, PM1 (650°C/1200°F)	O-017H
<i>Not Shown</i>	Extended Pitot Tip for PM 2.5, PM1	MPT-6-181
<i>Not Shown</i>	Antiseize, Nickel Based, 4-oz can w/brush	AZNI-4

**For more information please contact us at:**

Tel: (919) 557-7300 / Email: info@apexinst.com / Web: www.apexinst.com